



MONTHLY MEMBERSHIP PROGRESS REPORT

District 315A2

Results as of: 05/31/2018

GMT: SWADESH RANJAN SAHA

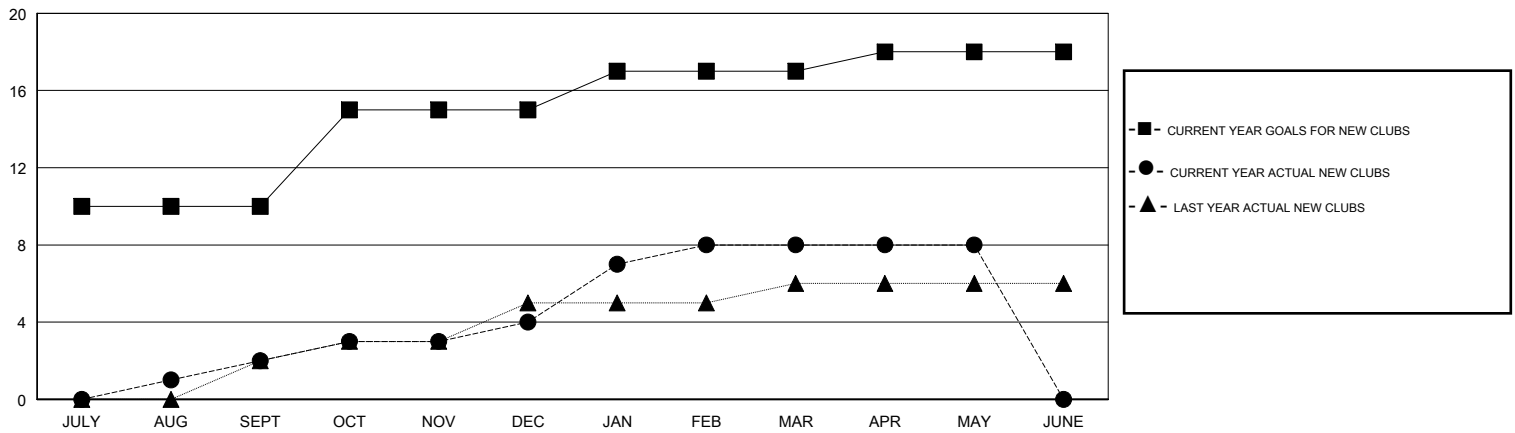
LOCATION REP OF BANGLADESH

GMT CA

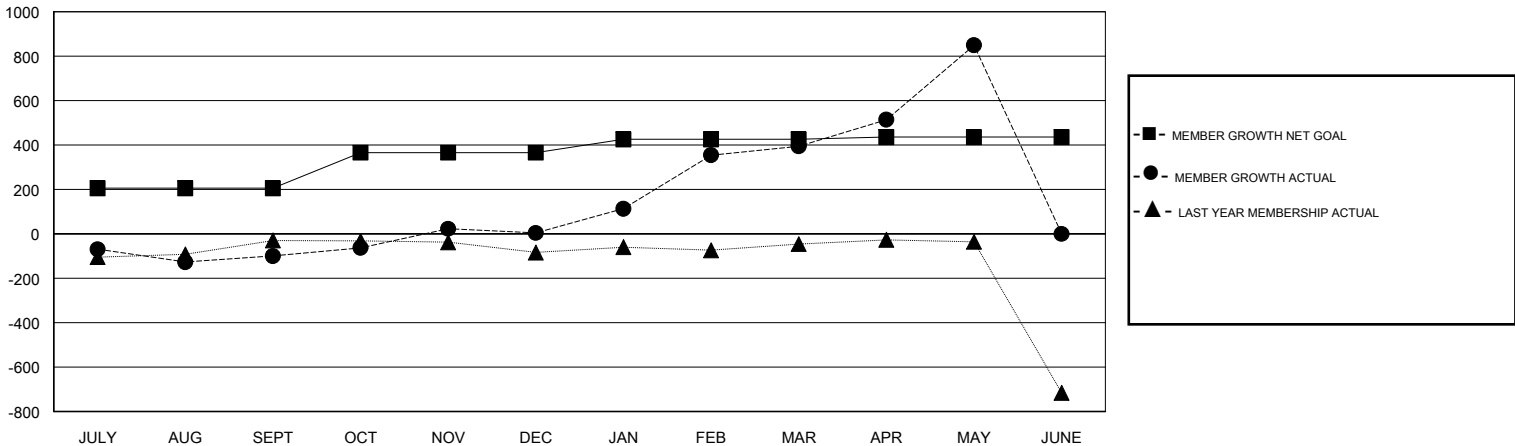
Clubs			
RESULTS FOR 2017-2018			
QUARTER	NEW CLUB GOAL	NEW CLUBS	DROPPED CLUBS
JULY/AUG/SEPT	10	2	2
OCT/NOV/DEC	5	2	1
JAN/FEB/MAR	2	4	1
APR/MAY/JUNE	1	0	4

Members			
RESULTS FOR 2017-2018			
QUARTER	MEMBER GROWTH NET GOAL	MEMBER GROWTH ACTUAL	DROPPED MEMBERS ACTUAL (including transfers)
JULY/AUG/SEPT	205	147	239
OCT/NOV/DEC	160	184	70
JAN/FEB/MAR	60	1,123	269
APR/MAY/JUNE	10	650	173

GOALS AND ACTUAL NEW CLUBS CUMULATIVE



GOALS AND ACTUAL MEMBERS CUMULATIVE



DROPPED CLUBS: 8	100 CLUBS OF 129 ADDED 1 OR MORE NEW MEMBERS	<u>GENDER DISTRIBUTION</u> MALE 3,541 (77.45%) FEMALE 1,031 (22.55%) Women Percentage Fiscal Year Goal: 25%
<u>DROPPED MEMBERS</u> DECEASED 5 CLUB CANCELLED 118 OTHER 617 TOTAL 740	CLICK HERE FOR CUMULATIVE MEMBERSHIP DATA	TOTAL FAMILY UNIT MEMBERS 2,734 FAMILY MEMBERS PAYING HALF DUES 2,085